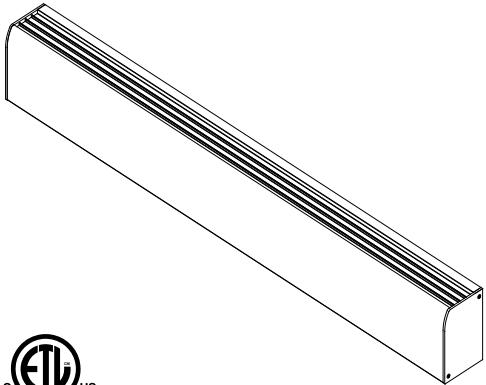




MADE IN THE U.S.A.

9100 SERIES RADIUS FRONT DRAFT BARRIER HEATER

CUSTOMER		DATE:	
PROJECT			
LOCATION			
ARCHITECT			
ENGINEER			
CONTRACTOR			
SUBMITTED BY			
APPROVED BY			
APPROVED BY			

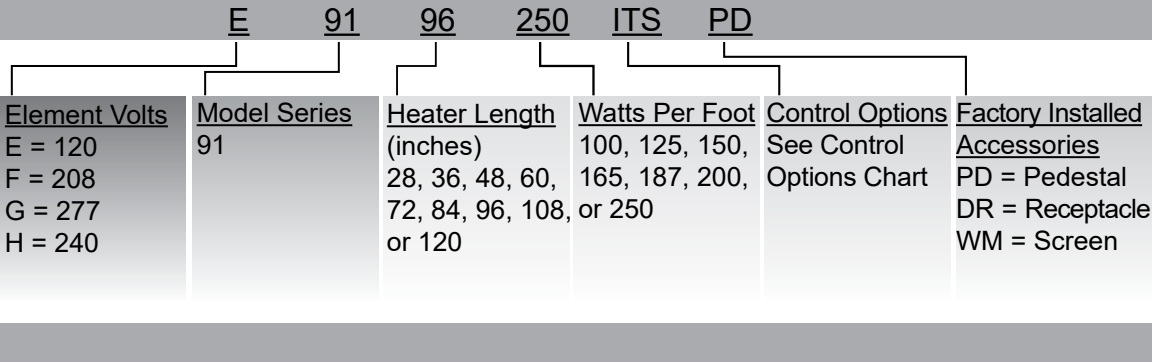


SUBMITTAL DATA SHEET

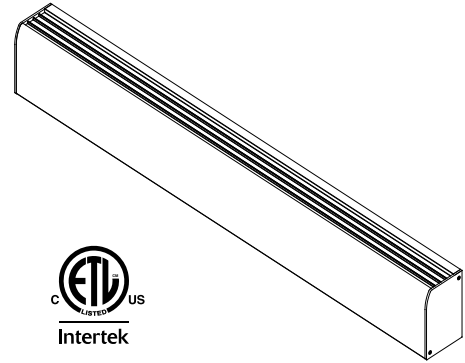
QTY	TAG	VOLTS	SERIES	HEATER LENGTH (IN)	WATTS PER FT.	CONTROL OPTIONS	FACTORY INSTALLED OPTIONS	FIELD INSTALLED OPTIONS	CUSTOM LENGTH

NOTES/SPECIAL INSTRUCTIONS:

HOW TO DESIGNATE A MODEL:



- Standard color - Bankers Bronze
- Uni-Lock construction allows snap-fit, 2-piece installation
- Stainless steel heating element with aluminum fins
- Full length manual reset linear limits
- Wall mount or floor mount (with pedestals)
- 14 Gauge extruded 6063 aluminum heat treated to T5 hardness
- Can be wired from either end



Product Specifications

CABINET

9100 Series shall be constructed of 14 gauge extruded 6063 Aluminum heat treated to T5 hardness. The uni-lock construction shall allow easy installation and access to back plate for wiring. The snap-fit front cover makes installation and service very simple. Custom factory enclosures to 1/8 inch increments are built for exact wall to wall fit up to 10 foot enclosure lengths. The 14 gauge back plate will have electrical knockouts for incoming power on each end adjacent to junction box. Pedestal mounted units will have incoming power connection through the pedestal on bottom of unit and will have smooth back for optional finished back. The die punched front cover will have no screw heads or fasteners.

ELEMENTS

High mass sheathed element construction with Nickel-Chromium resistance wire embedded in compacted efficient die-electric to ensure proper heat transfer. Aluminum fins mechanically bonded to stainless steel tube allows for increased surface area and even heat transfer.

LIMIT CONTROLS

Manual reset hydraulic thermal overload covers full length of heating element and shuts down heater when safe operating temperatures are exceeded.

WIRING

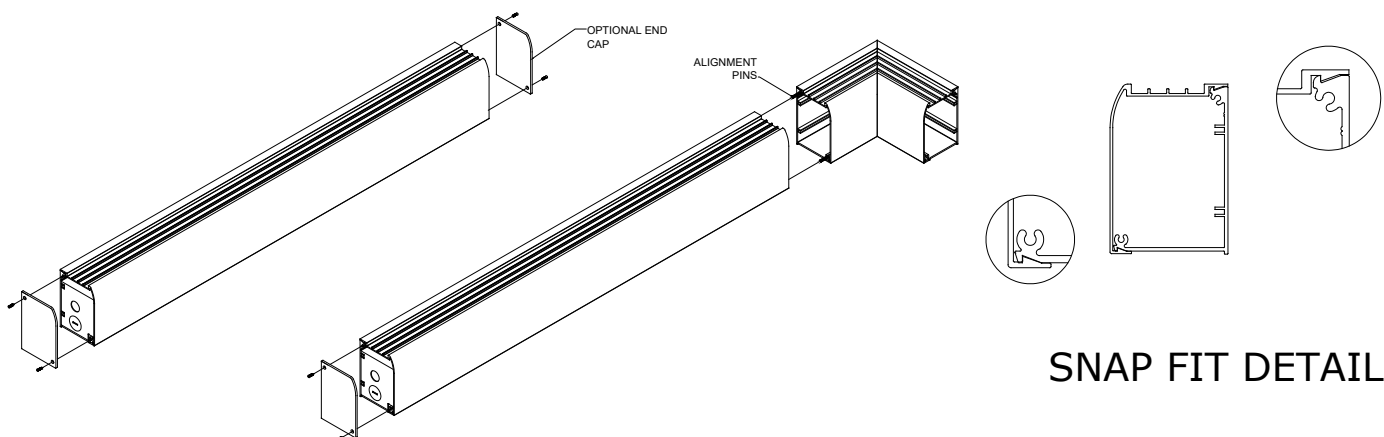
Wiring shall be in either end of the enclosure. Wiring can be in the junction box or optional control section if additional controls are needed. Pedestal mounted units shall have 1 1/4" hole through the pedestal and in the bottom of the enclosure for incoming power wiring. All heaters have a factory supplied built in raceway for wiring from either end of the heater or for wiring of continuous heater connections.

CONTROLS

Optional controls include single or double pole thermostat and disconnect switch that are factory wired in enclosed junction box on each end of heater enclosure. Relay, transformer relay and duplex receptacle options shall be mounted in extended length control section. **Control section will add to heater enclosure length.** The control section for the duplex receptacle will add 4" to enclosure length. The control section for other optional components or combinations of components will have two options (6" or 12") depending on controls required.

APPLICATION

The 9100 series is ETL listed for commercial, industrial or residential applications on all units up to 250 Watts per foot.



SNAP FIT DETAIL

Product Description

TECHNICAL INFORMATION	
Air Intake	Bottom
Air Discharge	Top
Min Mounting Height	3"
Max Watts / Foot	250
Max Allowable Amps	25 Amps (20 Amps with disconnect)
Voltage / Phase	120V/208V/240V/277V Single Phase

TECHNICAL INFORMATION	
Height	4 1/2"
Depth	3 1/8"
Length	28" to 120" in 1' increments
Cabinet Material	Aluminum
Material Gauge	14
Optional Controls That Can Be Built Into Unit	Thermostat and Disconnect Switch (Control Section Required for Relays)

Standard Models

	MFG MODEL		UNIT LENGTH		
	Heater	9128	28"	Blank Section	91BS012
9136		36"	91BS024		24"
9148		48"	91BS036		36"
9160		60"	91BS048		48"
9172		72"	91BS060		60"
9184		84"	91BS072		72"
9196		96"	91BS084		84"
91108		108"	91BS096		96"
91120		120"	91BS108		108"
			91BS120	120"	

Factory Installed Accessories

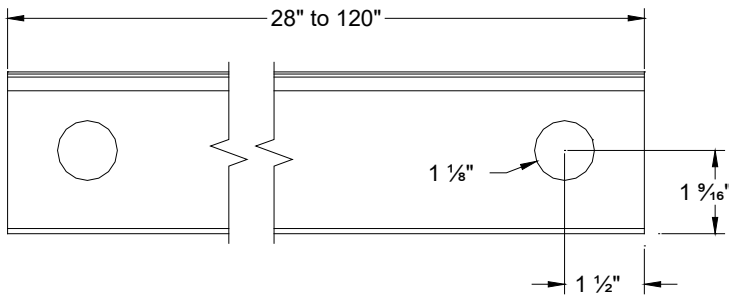
SUFFIX	DESCRIPTION
DR	Duplex Receptacle in 4" Extended Enclosure (not available with 120" heater)
PD	28" through 60" - 2 Required
	72" through 96" - 3 Required
	108" through 120" - 4 Required
WM	1/4" wire mesh under grill

Field Installed Accessories

MFG MODEL	DESCRIPTION
9100IC	Inside Corner Section 90° or 135°
9100OC	Outside Corner Section 90° or 135°
9100EC	Right or Left End Cap
9100SP	Splice Plate

Control Options

SUFFIX	DESCRIPTION
CS6	6" Control section (up to 2 control options)
CS12	12" Control section (up to 3 control options)
ITS	Single pole in-built thermostat 20 Amp
ITD	Double pole in-built thermostat 20 Amp
IDS	Double pole disconnect 16 Amp
PR120-277/24	Relay for 24 volt control
PR120-277/120	Relay for 120 volt control
PR120-277/240	Relay for 240 volt control
ATR	Transformer / relay for internal 24 volt control



BACK VIEW

