

CABINET UNIT HEATER

STANDARD AND CUSTOM

6300/T Series

WARNING! DO NOT ATTEMPT TO INSTALL, OPERATE, OR SERVICE THIS PRODUCT BEFORE READING ALL INSTRUCTIONS CAREFULLY. FAILURE TO COMPLY WITH THESE INSTRUCTIONS COULD RESULT IN FIRE, PERSONAL INJURY AND/OR PROPERTY DAMAGE! RETAIN INSTRUCTIONS FOR FUTURE REFERENCE.

DESCRIPTION

Electric Cabinet Unit Heaters provide quiet, controlled heat distribution by centrifugal blowers and a variety of air inlet and discharge arrangements.

The cabinet is styled for use in offices, stores, schools, churches, dormitories, airport terminals, reception rooms, entrance lobbies, corridors and stairwells. They are easily installed in new or existing buildings.

These heaters are painted with a beige, baked-on textured finish which blends with almost any location. Cabinet unit heaters are designed for recessed, semi-recessed or surface mounting on walls, or ceilings.

Standard models feature a fan switch, hi-lo fan and heat operation, dust filter, single/three phase field convertible, 24 volt control circuit, built-in thermostat and field convertible for remote thermostat control.

ASSEMBLY

Cabinet Unit Heaters come completely assembled. No assembly is required.

REQUIRED CLEARANCE

REFER TO MOUNTING CLEARANCES ON PAGE 3.

SPECIFICATIONS

Housing.....Constructed with durable 16ga. steel
Housing finish.....Baked-on textured beige enamel
Wiring diagram.....Located inside center front access panel

Dimensions- Standard Models

W33", H25", D9-1/2" – 99lbs.....5KW Heater
W46", H25", D9-1/2" – 130lbs.....10KW Heater

Dimensions- Custom Models

W33", H25", D9-1/2" – 99lbs.....2 thru 6KW Heater
W46", H25", D9-1/2" – 130lbs.....4 thru 12KW Heater
W66", H25", D9-1/2" – 215lbs.....6 thru 18KW Heater
W79", H25", D9-1/2" – 248lbs.....8 thru 24KW Heater

IMPORTANT SAFETY INFORMATION

Read all instructions before using this heater.

1. Follow all local and electrical codes, the National Electric code (NEC) and the Occupational Safety and Health Act (OSHA).
2. Before attempting any electrical connections or inspections for any reason to service the heater, make sure that the circuit breaker controlling the circuit to which the heater is to be connected has been thrown to the OFF position, or make sure the fuse for the circuit has been removed. The circuit panel door, or fuse box door, should be locked or tagged to prevent unexpected application of power. Failure to do so could result in electrical shock.
3. The heater must be grounded in accordance with applicable codes to the ground screw provided in the housing. Failure to ground may result in electrical shock.
4. Protect the power supply cable from kinks, sharp objects, oil, grease, hot surfaces and chemicals.
5. Do not install heater behind room or cabinet doors or in a position where the air discharge or intake louvers can be blocked in any manner. Do not install behind towel racks, furniture, drapes or coat racks
6. Check heater voltage on data plate and make sure that it is the same as the electrical supply.
7. The wall/ceiling mounting structure and anchoring provisions must be of sufficient strength to support the weight of the heater.
8. All wiring and servicing of this heater should be done by a qualified electrician.
9. Do not locate this heater in an area where combustible vapors, gases, liquids, or excessive lint or dust is present.

SAVE THESE INSTRUCTIONS

INSTALLATION

Safe and dependable operation of the heater depends on proper installation by qualified personnel.

The heater can be mounted in any of the positions shown in Mounting Configurations, observing proper clearances from the inlet and outlets as shown in Mounting Configurations. In all positions, clearance from the end of the heater to a side wall is zero inches.

Inlet grille and outlet grilles can easily be field altered. In no case can inlet and outlet grilles be partially recessed into the walls or ceilings.

Mounting holes are provided in the back of the cabinet, accessible through the blower compartment, for securing the heater to the wall. In some cases, it may be necessary to remove the blower deck if more mounting screws or bolts are desired. The blower deck may be slipped forward by loosening two screws at the front to provide access to mounting holes located behind the blowers.

NOTE: For ceiling mounted heaters, never use internal thermostat. Always use a field supplied external thermostat.

OPERATING INSTRUCTIONS

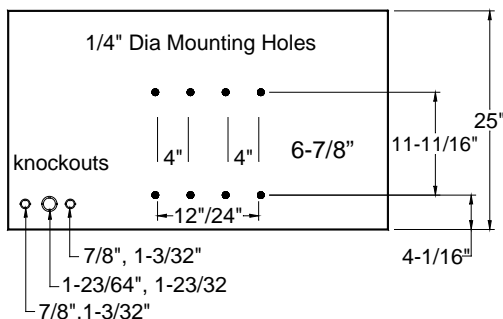
Controls are accessible through the discharge grille, using a screwdriver. The rocker switch for heat can be adjusted for high or low, and the rocker for the summer fan (if supplied) can be set for automatic or "continuous fan" for continuous room air circulation. Adjust the thermostat and let the heater operate a few hours. If more or less heat is then desired, adjust accordingly. If a remote thermostat is desired, remove factory installed jumper wire on the control terminal block. Attach wires from the remote field supplied thermostat. Adjust the heat/fan rocker switch to either high or low.

Cabinet Size	Nominal Low CF	Nominal High CFM
33"	230	250
46"	460	500
66"	690	750
79"	920	1000

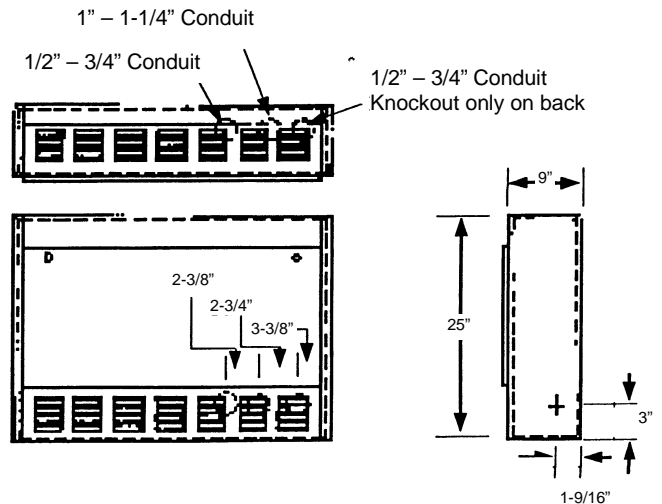
The 480 volt, 3-phase, 3-wire; 600 volt 1-phase and 600 volt 3-phase units are all single speed only.

If external load management control of the unit is desired, replace factory installed jumper wire on the control terminal block with leads from the external management control.

Refer to page 7 for description of control options.



Mounting Dimensions



MAINTENANCE

WARNING: Disconnect heater from power supply before servicing and/or inspecting the heat source. Failure to do so may result in electrical shock.

1. Fan and motor are permanently lubricated. No oiling is necessary.
2. Make sure all wire connections are tight.
3. Be sure to keep the blower wheel tight on the motor shaft.
4. For optional filters—Periodically check the condition of the filter. The filter can be removed by opening the front access panel with a screwdriver. Lift the filter up and out. (Contact Fostoria Industries or your local distributor for replacement filters. Please provide the model number of the heater and whether the filter is disposable or permanent).

TROUBLESHOOTING CHART

SYMPTOM	POSSIBLE CAUSE(S)	CORRECTIVE ACTION
Heater does not energize	<ol style="list-style-type: none"> 1. Defective thermostat 2. Defective Hi/Lo switch 3. Defective transformer 4. Defective linear limit 5. Tripped manual limit(s) 	<ol style="list-style-type: none"> 1. Replace thermostat 2. Replace Hi/Lo switch 3. Replace transformer 4. Replace linear limit 5. Determine cause before resetting*
No power to heater	<ol style="list-style-type: none"> 1. Defective fuse or breaker 	<ol style="list-style-type: none"> 1. Check fuse/circuit breaker
Not enough heat	<ol style="list-style-type: none"> 1. Element may be Defective. 2. Defective contactor 3. Defective Hi/Lo switch 4. Air filter may be dirty 5. Defective fan motor 6. Defective fan time delay relay. 	<ol style="list-style-type: none"> 1. Replace defective element(s) 2. Replace contactor 3. Replace Hi/Lo switch 4. Replace/clean filter 5. Replace fan motor 6. Replace fan time delay relay

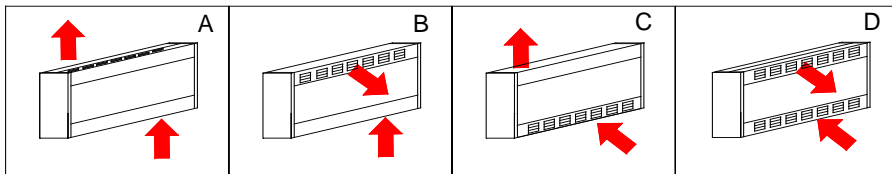
* If unit is installed in/on ceiling, check for temperature stratification

MOUNTING CONFIGURATIONS

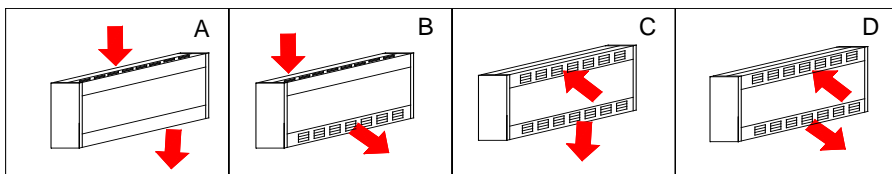
All Angle Heater Series offers a selection of air inlet and discharge arrangements. Inlet and outlet grille arrangements are easily altered by opening front panel of unit and removing (2) screws.

Heaters Cannot be mounted on the END!

UP FLOW

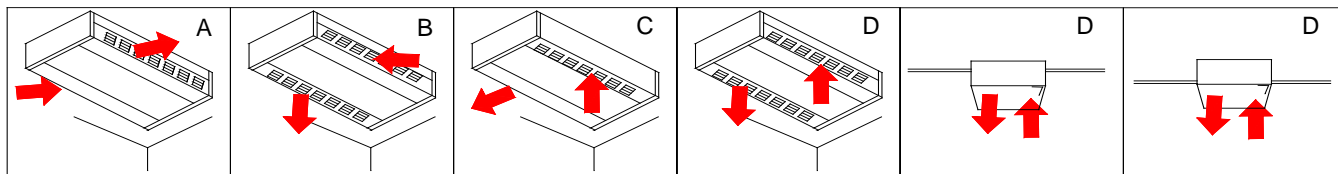


DOWN FLOW

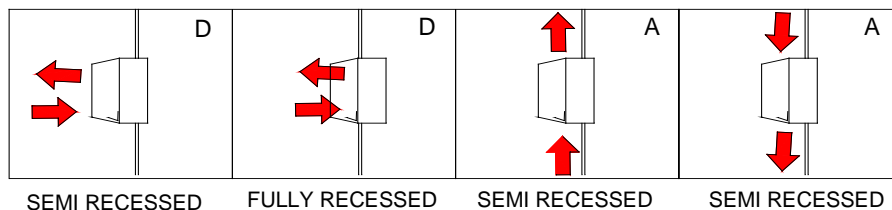


Unit may be mounted upside down to reverse direction of air flow.

CEILING



WALL



NOTE: Semi recessed to be recessed 3 1/2" maximum unless both inlet and outlet grilles are to the front.

MOUNTING CLEARANCES

Proper clearances are indicated for each mounting configuration. In all positions, clearance from end of heater to a side wall is zero inches.

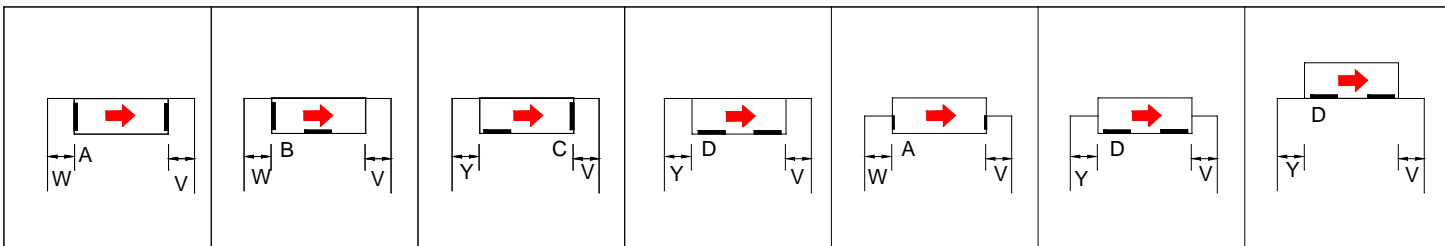
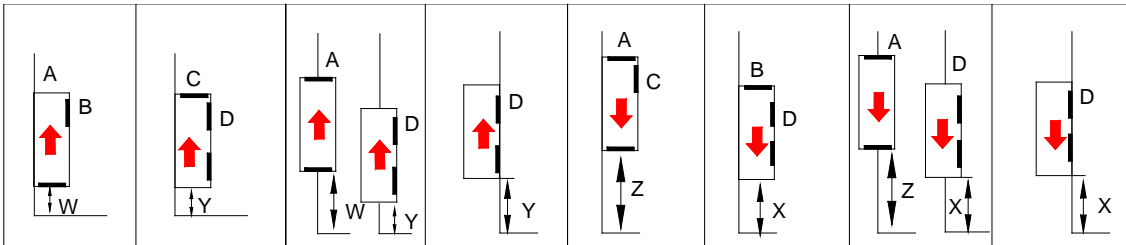
Mounting holes are provided in the back of the cabinet, accessible through the blower compartment. If necessary, remove blower deck if additional mounting screws or bolts are desired. Blower deck may be slipped forward by loosening four screws at the front to provide access to mounting holes.

KEY

- W 6" minimum
- X 12" minimum
- Y 0 or greater
- Z 24" minimum
- V 48" minimum

UP FLOW

DOWN FLOW



CAUTION

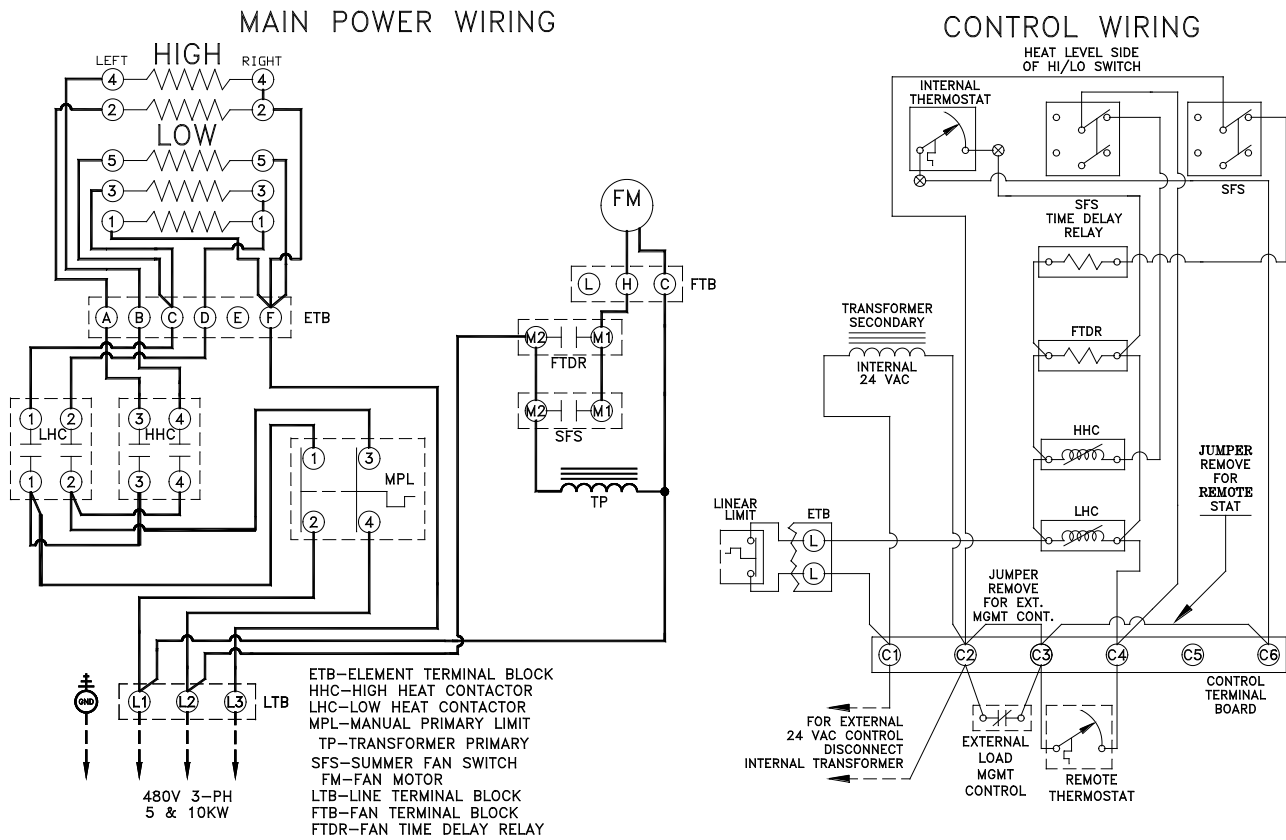
The NEC requires that over current protection and supply wire for electric heating equipment be rated at least 125% of the full amp load of the circuit. A field supplied disconnect switch should be used to control the input voltage to the unit.

All supply wiring shall conform to the latest edition of the NEC and to all local codes having jurisdiction. Conduit knockouts are provided in the back of the wiring compartment. Make sure all field wiring connections are properly made and are tight.

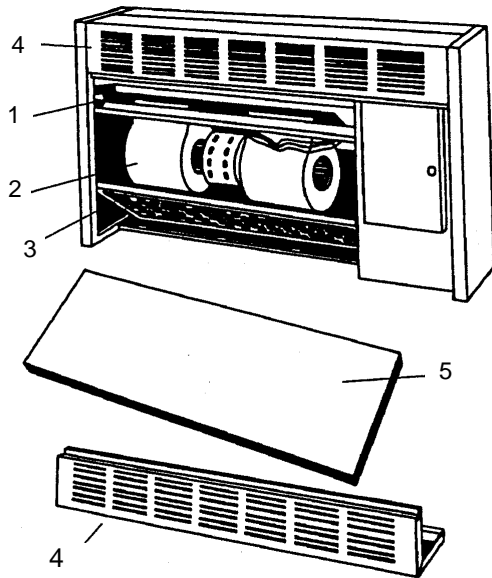
Electrical Ground---This heater must be grounded before operating, as required by the National Electric Code and by applicable local codes. Use a conductor, of the appropriate size, secured to the ground lug in the heater and to a grounded connection in the service panel.

Typical Wiring

For actual wiring of your unit(s) refer to the diagram located inside the front access panel.



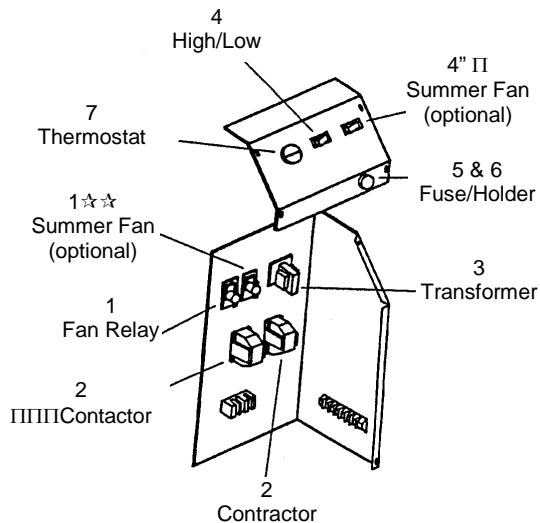
PARTS VIEW AND PARTS LIST ..Directional Air Heater Final Assembly



Unit Length	Item	Part No.	Description	Qty
33"	1	**	Heat deck assbly-SNG	1
	2	**	Blower deck assembly-SNG	1
	3	52293001	Disposable filter-SNG	1
	4	62273001	Intake/discharge grille*	2
	5	58337001	Front Panel	1
46"	1	**	Heat deck assbly-DBL	1
	2	**	Blower deck assembly-DBL	1
	3	52293002	Disposable filter-DBL	1
	4	62273002	Intake/discharge grille*	2
	5	58337002	Front Panel	1
66"	1	**	Heat deck assbly-SNG	1
	2	**	Heat deck assbly-DBL	1
	3	**	Blower deck assembly-SNG	1
	4	**	Blower deck assembly-DBL	1
	5	**	Disposable filter-SNG	1
79"	1	**	Disposable filter-DBL	1
	2	**	Intake/discharge grille*	2
	3	52293002	Front Panel	1
	4	62273004		2
	5	58337004		1

*Field adjustable for various configurations

**See page 6 for individual parts



☆ Switch available on all units except 480V, 3-phase, 3-wire and 600V, 3-phase and single phase units.

☆☆ Required for optional summer fan in 480V, 3-phase, 3-wire, and 600V, 3-phase and single units.

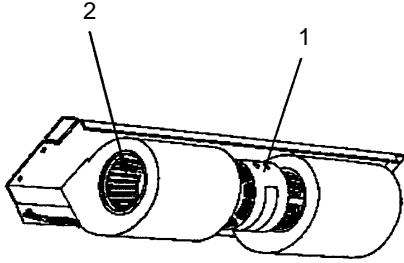
☆☆☆ For 415/240 and 480/277 ST Option Contact Factory for part number.

Voltage	Item	Control Options			
		B1/B8	B2/B7	B3/B5	B4/B6
208-3/1	1	51135006	51135001	51135001	51135006
	2	58027006	58027001	58027001	58027002
	3	N/R	N/R	60719037	41043001
240-3/1 & 415-3	1	51135006	51135001	51135001	51135006
	2	58027002	58027001	58027001	58027002
	3	N/R	N/R	60719037	41017001
277-1& 480-3 4-wire	1	51135006	51135001	51135001	51135006
	2	58027002	58027001	58027001	58027002
	3	N/R	N/R	60719011	41017009
480-1& 480-3 3-wire	1	51135006	51135001	51135001	51135006
	2	58027002	58027001	58027001	58027002
	3	N/R	N/R	60719012	41017001
600-3/1	1	51135006	51135001	51135001	51135006
	2	58027002	58027001	58027001	58027002
	3	N/R	N/R	60719040	58342002
All	4	42438001	42438001	42438001	42438001
	5	Optional	Optional	Optional	44066001
	6	Optional	Optional	Optional	40062001
	7	B1 thru B4 – 93854088 B5 thru B8 – 93854112			

II Excludes 208/240V 3-phase 66" and 79" units, 18 and 24 KW.
Consult factory. See page 7 for description of control options

PARTS VIEW AND PARTS LIST (CONTINUED)

Blower Deck Assembly



66 and 79 inch units are Custom Specified Cabinets Unit Heaters

Unit Length	Volts	Phase	Item	Part No.	Description	Qty
33"	208/240	3/1	1	52289001	208/240V Motor single shaft	1
	415	3-4wire		52289001	208/240V Motor single shaft	
	277	1		52289003	277V Motor single shaft	
	480	3-3wire/1		52289004	480V Motor single shaft	
	480	3-4wire		52289003	277V Motor single shaft	
	600	3/1		52289005	575V Motor single shaft	
	All	3/1	2	62441001	Blower wheel	1
46"	208/240	3/1	1	52290001	208/240V Motor Double shaft	1
	415	3-4wire		52290001	208/240V Motor Double shaft	
	277	1		52290003	277V Motor Double shaft	
	480	3-3wire/1		52290004	480V Motor Double shaft	
	480	3-4wire		52290003	277V Motor Double shaft	
	600	3/1		52290005	575V Motor Double shaft	
	All	3/1	2	62441001	Blower wheel	2
66"	208/240	3/1	1	52289001	208/240V Motor single shaft	1
	415	3-4wire		52290001	208/240V Motor double shaft	
	277	1		52289003	277V Motor single shaft	
				52290003	277V Motor double shaft	
	480	3-3wire/1		52289004	480V Motor single shaft	
				52290004	480V Motor double shaft	
	480	3-4wire		52289003	277V Motor single shaft	
				52290003	277V Motor double shaft	
	600	3/1	52289005	575V Motor single shaft		
		52290005	575V Motor double shaft			
All	3/1	2	62441001	Blower wheel	3	
79"	208/240	3/1	1	52290001	208/240V Motor double shaft	2
	415	3-4wire		52290001	208/240V Motor double shaft	
	277	1		52290003	277V Motor double shaft	
	480	3-3wire/1		52290004	480V Motor double shaft	
	480	3-4wire		52290003	277V Motor double shaft	
	600	3/1		52290005	575V Motor double shaft	
	All	3/1	2	62441001	Blower wheel	4

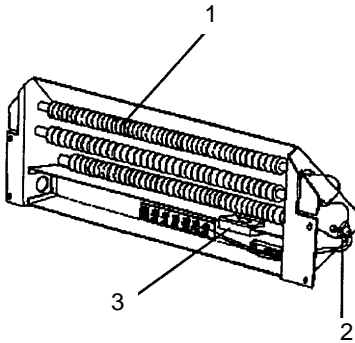
NOTE: 1. 66" Units use the following sizes of Heat/Blower deck assemblies.

A) Qty.1 ea.-33

B) Qty. 1 ea.-46"

2. 79" Units have (2) 46" Heat/Blower deck assemblies.

Heat Deck Assembly



Unit Length	Volts	PH.	Item	Part No.	Description	Qty
33"	208	3/1	1	52275001	208V 1KW Heating Element	II
	240	3/1		52275002	240V 1KW Heating Element	
	277	1		52275003	277V 1KW Heating Element	
	415	3		52275002	240V 1KW Heating Element	
	480/277	3/1		52275003	277V 1KW Heating Element	
	480	III II		52275004	480V 1KW Heating Element	
	600	1		52275013	2,4&6KW-300V 1KW Heating Element	
				52275014	3&5KW-347V 1KW Heating Element	
				52275013	2&4KW-300V 1KW Heating Element	
				52275014	3,5&6KW-347V 1KW Heating Element	
46"	208	3/1	1	52275005	208V 2KW Heating Element	II
	240	3/1		52275006	240V 2KW Heating Element	
	277	1		52275007	277V 2KW Heating Element	
	415	3		52275006	240V 2KW Heating Element	
	480/277	3/1		52275007	277V 2KW Heating Element	
	480	III II		52275008	480V 2KW Heating Element	
	600	3/1		52275012	600V 2KW Heating Element	
All Units			2	60149051	Linear Safety Limit	1
			3	44067001	Manual Reset Limit	1II

IIQuantity varies with KW

IIIAll except for the following 66" and 79" 3-phase units: which have Qty. 2

208V - 16KW thru 24KW

240V - 20KW thru 24KW

IIIIBoth 2-Wire, 3-Wire and 4-Wire systems.

Description of control options for "Custom Specified" Cabinet Unit Heaters

Note: All units are field convertible to the following:

1. For control by a field supplied remote thermostat.
2. Load management control with an external dry switch. When closed, unit operates under control of the internal or external thermostat. When open, unit turns off.

B1--- Built-in single stage thermostat and relays which are operated by a field supplied 120 volt source.

Night set back can be accomplished by interrupting the 120 volt source to the unit. The unit is field convertible to the following:

1. With a program controller provided by the installer; when the controller supplies the 120 volt source to the unit, it will heat until the internal thermostat is satisfied. At night, the program controller will switch to a zone thermostat which will control the 120 volt source to all of the heaters.

B2--- Built-in single stage thermostat and relays which are operated by a field supplied 24 volt source.

Night set back can be accomplished by interrupting the 24 volt source to the unit. The unit is field convertible to the following:

1. With a program controller provided by the installer; when the controller supplies the 24 volt source to the unit, it will heat until the internal thermostat is satisfied. At night, the program controller will switch to a zone thermostat which will control the 24 volt source to all of the heaters.

B3--- Built-in single stage thermostat and relays which are operated by and internal 24 volt source.

B4--- Built-in single stage thermostat and relays which are operated by an internal 120 volt source.

(also includes fusing in the fan circuit and the transformer primary.)

B5--- Built-in two stage thermostat and relays which are operated by and internal 24 volt source.

B6--- Built-in two stage thermostat and relays which are operated by an internal 120 volt source.

(also includes fusing in the fan circuit and the transformer primary.)

B7--- Built-in two stage thermostat and relays which are operated by a field supplied 24 volt source.

Night set back can be accomplished by interrupting the 24 volt source to the unit. The unit is field convertible to the following:

1. With a program controller provided by the installer; when the controller supplies the 24 volt source to the unit, it will heat until the internal thermostat is satisfied. At night, the program controller will switch to a zone thermostat which will control the 24 volt source to all of the heaters.

B8--- Built-in two stage thermostat and relays which are operated by a field supplied 120 volt source.

Night set back can be accomplished by interrupting the 120 volt source to the unit. The unit is field convertible to the following:

1. With a program controller provided by the installer; when the controller supplies the 120 volt source to the unit, it will heat until the internal thermostat is satisfied. At night, the program controller will switch to a zone thermostat which will control the 120 volt source to all of the heaters.

Note: Standard Units are equipped with B3 Control Option

STANDARD CABINET UNIT HEATER SPECIFICATIONS

Standard Unit Heaters are 33" and 46" wide.

Model	Heat Output Kw		Norm. CFM Output		Fan Speed RPM		BTUH (1,000's)	Volts/HZ 50/60	Amps		Copper Wire Size 75°C AWG	Maximum Fuse Size
	HI	LO	HI	LO	HI	LO			1PH	3PH		
6333D052033B300F	5	3	250	230	1550	1400	171/10.2	208/60	25.04II	17.57	8/10	35/25
6333D052433B300F	5	3	250	230	1550	1400	17.1/10.2	240/60	21.83II	15.38	10/12	30/20
6333D054834B300F	5	3	250	230	1550	1400	17.1/10.2	277-480/60	18.95IIII	8.02	10/14	25/15
6333D054833B300F	5	3	250	-	1550	-	17.1/10.2	480/60	-	7.76	14	15
6333D055733B300F	5	3	250	-	1550	-	17.1/10.2	600/60	-	5.48	14	15
6346D102033B300F	10	6	500	460	1550	1400	34.1/20.5	208/60	49.98IIII	35.06	6/8	70/45
6346D102433B300F	10	6	500	460	1550	1400	34.1/20.5	240/60	43.57II	30.68	6/8	60/40
6346D104834B300F	10	6	500	460	1550	1400	34.1/20.5	277-480/60	37.70IIII	15.87	6/12	50/20
6346D104833B300F	10	6	500	-	1550	-	34.1/20.5	480/60	-	15.35	12	20
6346D105733B300F	10	6	500	-	1550	-	34.1/20.5	600/60	-	12.28	12	20

II Comes factory wired as a 3-phase unit, can be field converted to single phase IIII comes factory wired as 480V/3-phase/4-wire unit, can be field converted to 277V/single phase

"CUSTOM-BUILT" CABINET UNIT HEATER MODEL NUMBER BREAKDOWN

I 46 D 08 24 1 2 B3 S C M F D P
A B C D E F G H I J K L M N

- A) Series designation – T
- B) Cabinet size – 33 = 33 in., 46 = 46 in., 66 = 66 in., or 79 = 79 in.
- C) Inlet-outlet arrangement – A, B, C, or D
- D) Rating in KW – 02 through 24
- E) Voltage rating – 20 = 208V, 24 = 240V, 27 = 277V, 48 = 480V, or 57 = 600V
- F) Phase – 1 = 1phase or 3 = 3phase
- G) Number of wires in electric service – 2 = 2wires, 3 = 3wires, or 4 = 4wires
- H) Control option – B1 through B8, or ST
- I) Summer Fan Switch Option – S = Switch included or 0 = No switch
- J) Over current Protection Option – C = Circuit breaker included or 0 = No protection
- K) Motor Fusing Option – M = Motoring fuse included or 0 = No protection
- L) Filter Option – F = Filter included or 0 = No filter
- M) Disconnect Switch Option – D = Switch included or 0 = No switch
- N) Special Paint Color Option – P = Special color or Blank = Standard

"CUSTOM-BUILT" CABINET UNIT HEATER SPECIFICATIONS

Custom Specified Heaters are 33", 46", 66", 79" wide.

Heater Length	KW	# of Heat Elements per Deck		Heat KW		Fan Speed RPM	Total Heater Amps/Supply Wire 75 degrees C copper										
		LT	RT	Hi	Lo		Hi/Lo	Single Phase					Three Phase				
								208V	240V	277V	480V	600V	208V	240V	415V 4-Wire	480V 3-Wire	480V 4-Wire
33"	2	-	2	2	1	1550/1400	10.62/14	9.33/14	8.12/14	4.67/14	3.83/14	9.22/14	8.13/14	4.80-14	4.14/14	4.40/14	3.33/14
	3	-	ΠΠ3	3	2		15.42/12	13.50/12	11.73/14	6.75/14	5.50/14	9.22/14	8.13/14	5.17/14	4.14/14	4.40/14	3.38/14
	4	-	4	4	2		20.23/10	17/67/10	15.34/12	8.84/14	7.16/14	13.40/12	11.75/14	8.34/14	5.95/14	6.21/14	6.22/14
	5	-	ΠΠΠ5	5	3		25.04/8	21.83/10	18.95/10	10.92/14	8.00/14	17.57/10	15.38/12	8.34/14	7.76/14	8.02/14	5.48/14
	6	-	6	6	3		29.85/8	26.00/8	22.56/10	13.00/12	10.49/14	17.57/10	15.28/12	9.34/14	7.76/14	8.02/14	6.26/14
46"	4	-	2	4	2	1550/1400	21.13/10	18.57/10	16.00/12	9.29/14	7.46/14	18.36/10	16.16/10	9.59/14	8.11/14	9.92/14	6.49/14
	6	-	3	6	4		30.75/8	26.90/8	23.26/10	13.45/12	10.79/14	18.36/10	16.16/10	10.23/14	8.11/14	9.92/14	6.49/14
	8	-	4	8	4		40.36/6	35.23/8	30.48/8	17.62/10	14.12/12	26.71/8	23.42/10	16.66/10	11.73/14	12.25/12	9.39/14
	10	-	5	10	6		49.98/6	43.57/6	37.70/6	21.79/10	17.45/10	35.06/8	30.68/8	16.66/10	15.35/12	15.87/12	12.28/12
	12	-	6	12	6		59.59/4	51.90/6	44.92/6	25.95/8	20.78/10	35.06/8	30.68/8	18.56/10	15.35/12	15.87/12	12.28/12
66"	6	2	2	6	3	1550/1400	31.75/8	27.90/8	24.12/8	13.95/12	11.29/14	27.58/8	24.29/8	-	12.25/12	14.32/12	9.82/14
	9	ΠΠ3	3	9	6		46.17/6	40.40/8	34.99/8	20.20/10	16.29/12	27.58/8	24.29/8	-	12.25/12	14.32/12	8.87/14
	12	4	4	12	6		60.59/4	52.90/4	45.82/6	26.45/8	21.28/10	40.11/6	35.17/8	-	17.68/10	18.46/10	15.61/12
	15	ΠΠΠ5	5	15	9		75.02/3	65.40/4	56.65/4	32.70/8	25.45/8	52.63/4	46.06/6	-	23.11/10	23.89/10	15.66/12
	18	6	6	18	9		89.44/2	77.90/3	67.48/4	38.95/6	31.27/8	52.63/4	46.06/6	-	23.11/10	23.89/10	18.54/10
79"	8	2	2	8	4	1550/1400	42.26/6	37.14/6	32.00/8	18.57/10	14.92/12	36/72/6	32.32/8	-	16.22/10	19.84/10	12.98/12
	12	3	3	12	8		61.50/4	53.80/4	46.52/6	26.90/8	21.58/10	36/72/6	32.32/8	-	16.22/10	19.84/10	12.98/12
	16	4	4	16	8		80.72/2	70.46/3	60.96/4	32.23/8	28.24/8	53.42/4	46.84/6	-	23.46/10	24.50/8	18.78/10
	20	5	5	20	12		NA	87.14/2	75.40/3	43.57/6	34.90/8	70.12/3	61.36/4	-	30.70/8	31.74/8	24.56/8
	24	6	6	24	12		NA	NA	89.84/2	51.90/6	41.56/6	70.12/3	61.36/4	-	30.70/8	31.74/8	24.56/8

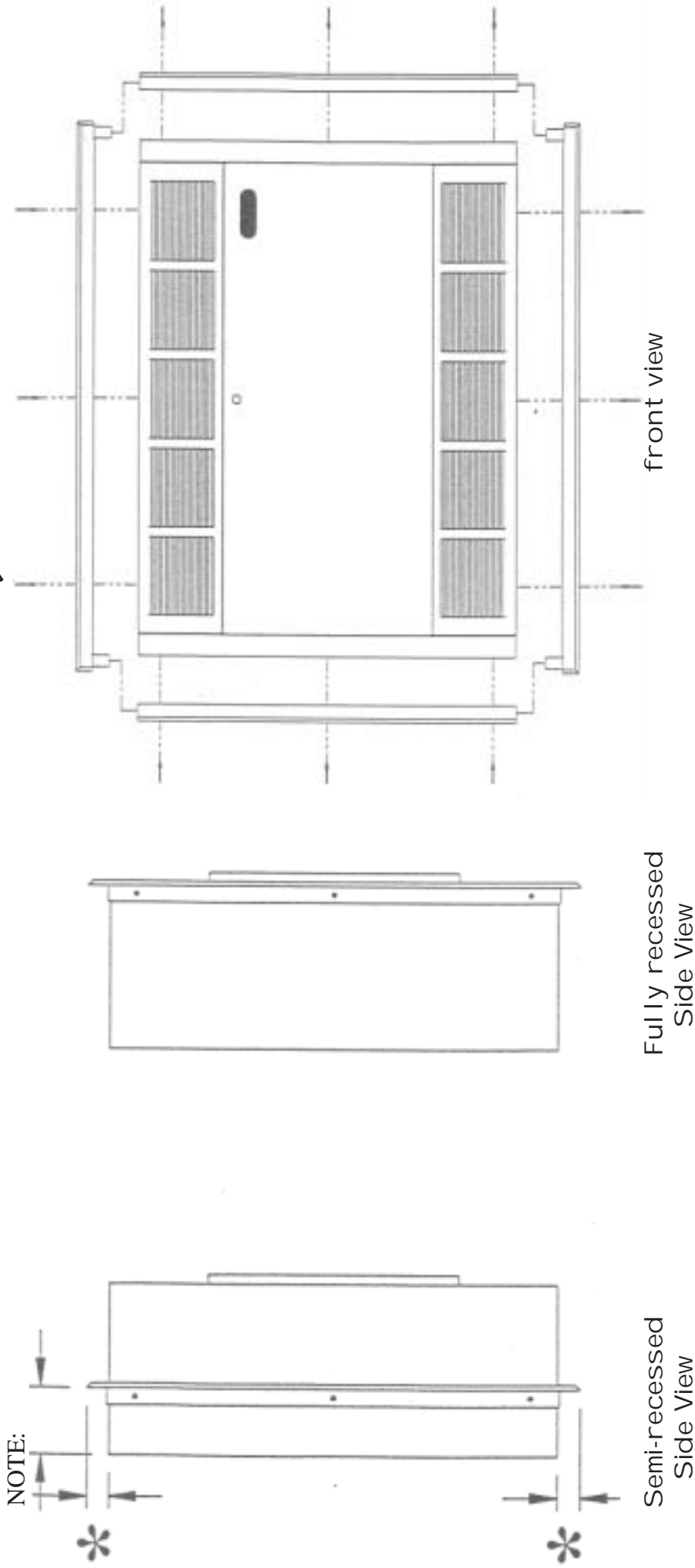
Π1600V 1-phase unit has (4) elements ΠΠΠ1600V 1-phase unit has (6) elements

TRIM FRAMES FOR CABINET UNIT HEATERS

INSTALLATION INSTRUCTIONS

NOTE: Semi-recessed to be recessed 3-1/2" maximum, unless both inlet and outlet grilles are to the front.

Attach Trim Frame to Cabinet with screws or rivets
(Field Supplied)



* Trim Frame extends 1" beyond outer dimensions of heater.

caution: trim frames are for decorative use only, they are not made for supporting the cabinet unit heater.

LIMITED WARRANTY

Products manufactured by TPI Corporation are warranted to the original consumer to be free from defects in material and workmanship for twelve (12) months from the original purchase date.

The TPI limited warranty does not cover products that have been modified outside of our factory, damage or failure caused by acts of God, abuse, misuse, connected to or placed on other than rated voltage, abnormal usage, fault, installation, failure to follow suggested maintenance procedures enclosed with the product, improper maintenance or any repairs other than those provided by an authorized TPI service center.

There are no obligations or liabilities on the part of the Corporation for consequential damages arising out of or in connection with the use or performance of the product or other indirect damages with respect to loss of property, revenues, profit, costs of removal installation, or reinstallation.

All implied warranties with respect to TPI products, including implied warranties for merchantability and implied warranties for fitness, are limited in duration to twelve (12) months from original date of purchase, except those products or parts of products which are warranted for long periods thereon.

Some states do not allow the exclusions or limitation of incidental or consequential damages and some states do not allow limitations on how long an implied warranty lasts. The above exclusions or limitations may not apply to you.

During the warranty period, TPI Corporation will, at its sole option, repair or replace any defective parts or products returned, freight prepaid, to the TPI Corporation factory or such other locations as TPI Corporation may designate. Returned products must be packaged carefully and TPI Corporation shall not be responsible for damage in transit.

When returning parts, the owner must provide the model number of the product and nature of difficulty being experienced. This warranty does not obligate TPI Corporation to bear the cost of labor in replacing any assembly, unit or component part thereof, nor does the company assume any liability for secondary charges, expenses for installing or removal, freight or damages. There will be charges rendered for product repairs made after the warranty period has expired. Proof of purchase, including date, must accompany request for in-warranty service. In any event, TPI Corporation's maximum liability shall not in any case exceed the list price for the product claimed to be defective. This warranty gives to you specific legal rights and you may have other rights, which may vary from state to state. For the name of your nearest authorized TPI Corporation service center, please write to TPI Corporation, P.O. Box 4973, Johnson City, TN 37602.

HEATING PRODUCTS WARRANTY COVERAGE	
Heating Products Elements in Baseboards	10 Years
All other Heating Products	1 Year
Thermostats and Controls	2 Years

VENTILATION PRODUCTS WARRANTY COVERAGE	
Series HD or HDH Fans	5 Years
Series UHP or IHP Fans	3 Years
All other Ventilation Products	1 Year